



HIGH LINE VENUES



CONTENTS

Overview

3

Brand Alignment &
Promotion Opportunities

4

CHELSEA MARKET
PASSAGE

5

DILLER – VON
FURSTENBERG
SUNDECK

16

14TH STREET PASSAGE

23

SPUR

32

COACH PASSAGE

37

10TH AVENUE SQUARE

43

THE PORCH

47

TIFFANY & CO.
FOUNDATION
OVERLOOK

49

PLANTING TERRACE

52

GANSEVOORT PLAZA

55

Press

59

Floorplans &
Specifications

60

Contact

73

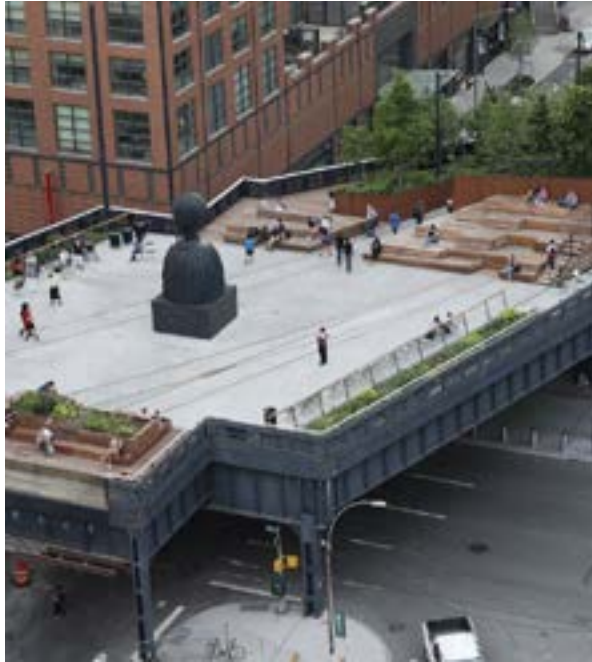
OVERVIEW

Thank you for your interest in the High Line. From sweeping views of the Hudson River to the raw, structural elements from the elevated railway's industrial past, the High Line provides a safe outdoor experience in an unrivaled New York City setting.

Founded in 1999 by a group of community residents, Friends of the High Line fought for the High Line's preservation and transformation at a time when the historic structure was under the threat of demolition. It is now the nonprofit conservancy working with the New York City Department of Parks & Recreation to make sure the High Line is maintained as an extraordinary public space for all visitors to enjoy.

Through our work with communities on and off the High Line, we're devoted to reimagining the role public spaces have in creating connected, healthy neighborhoods and cities.

Rental fees help keep the High Line clean, welcoming, and free to the public for all visitors to enjoy.



The Spur, adjacent to Hudson Yards and Manhattan West. Simone Leigh's *Brick House* (June 2019 - May 2021)



The High Line's venues vary in size and scale, offering unlimited possibilities for transformation.

BRAND ALIGNMENT & PROMOTION OPPORTUNITIES

Brand alignment

The High Line is one of the world's most innovative and beloved public spaces, offering visitors an outdoor experience unmatched anywhere else in New York.

Brands that activate on the High Line are excited to align with the park's forward-thinking design, sustainable practices, world-class art, and downtown location.

Promotion opportunities

The High Line promotes public-facing events and retail pop-ups across our communications channels, based on each partner's marketing needs.

Park visitation High Line visitation 8 million annual visitors

instagram.com @highlinenyc: 226,000 followers

On-site signage & materials Dedicated A-Frame signage in event space and inclusion on donor recognition wall in 14th Street Passage

Current as of February 2023



CHELSEA MARKET PASSAGE

Soaring covered passage through
the historic Chelsea Market building





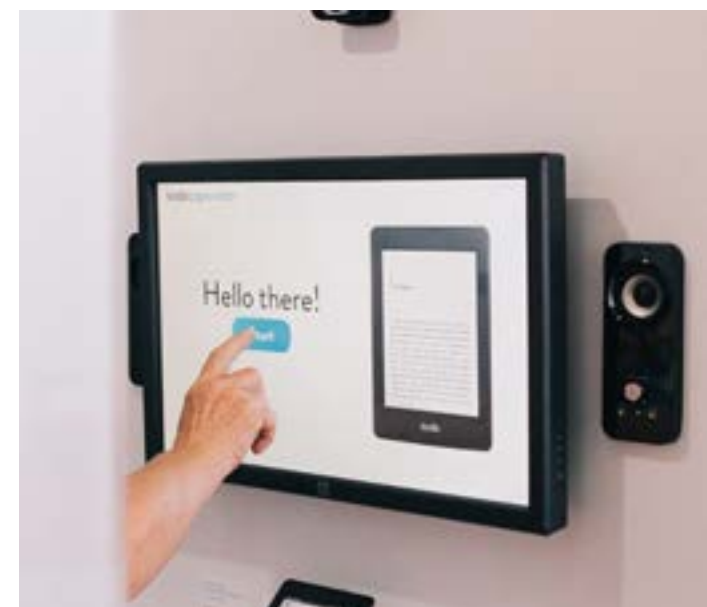


















DILLER – VON FURSTENBERG SUNDECK

Open-air venue featuring Hudson River
and sunset views















14TH STREET PASSAGE

Covered passage featuring raw, structural elements from the elevated railway's industrial past

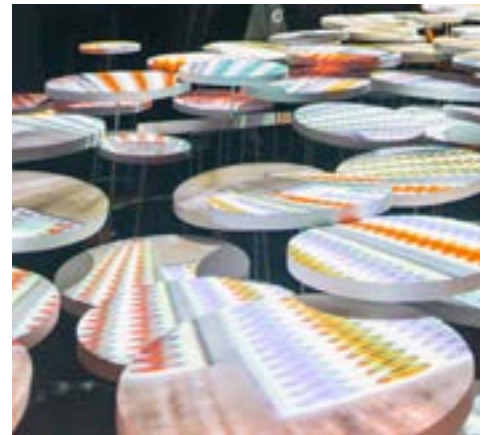




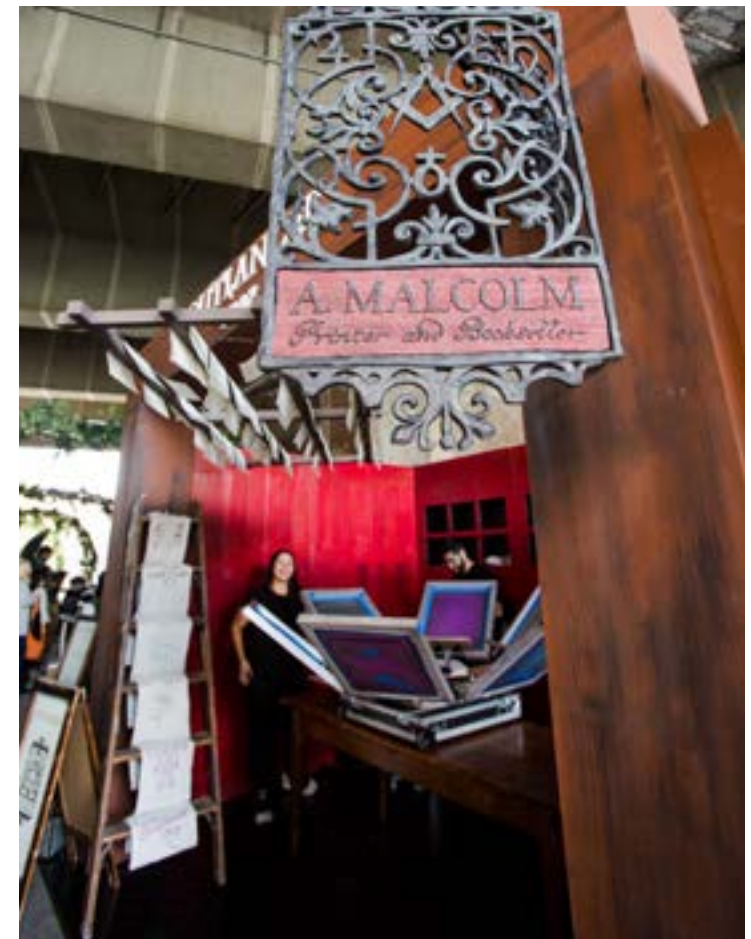


HIGH LINE 14th Street Passage











HIGH LINE 14th Street Passage







SPUR

Open-air piazza adjacent to Hudson Yards
featuring a rotating series of
public art commissions









COACH PASSAGE

Semi-covered passage adjacent
to Hudson Yards











HIGH LINE Coach Passage



10TH AVENUE SQUARE

Open-air amphitheater
overlooking 10th Ave.







THE PORCH

Open-air terrace and café featuring
Hudson River and sunset views

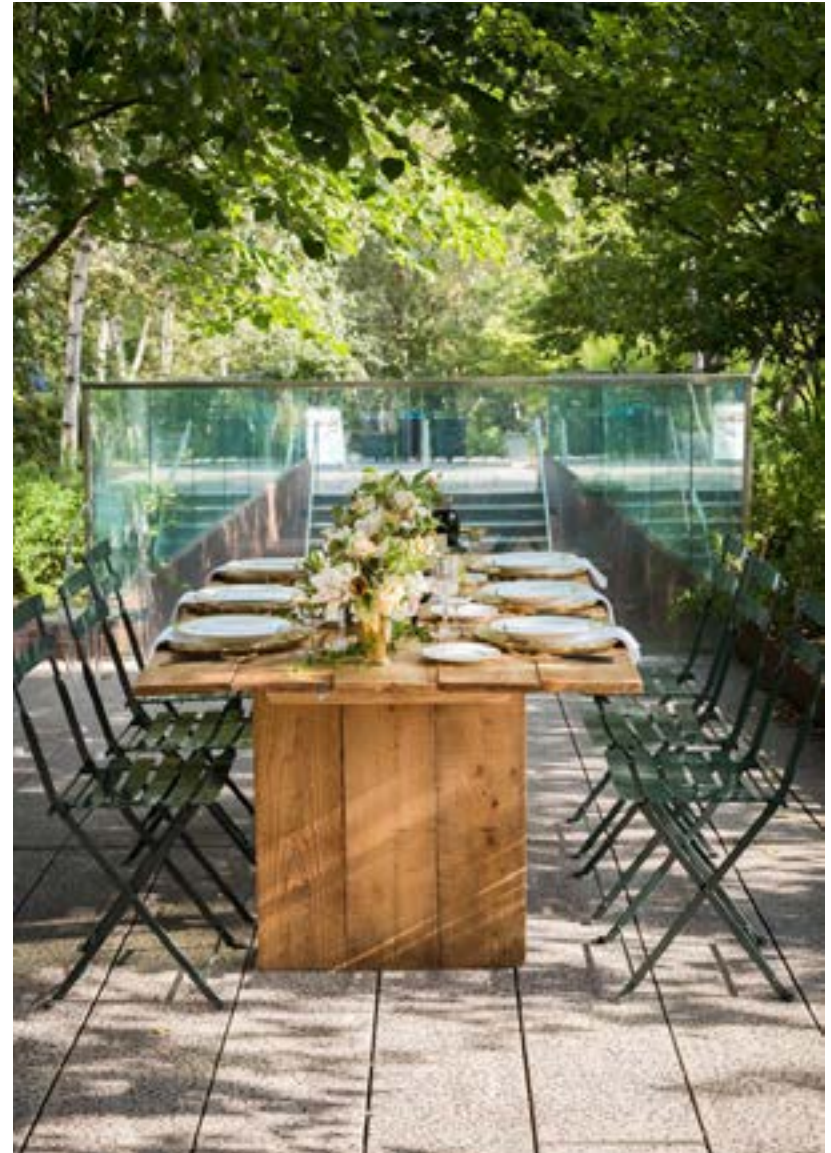


TIFFANY & CO. FOUNDATION OVERLOOK

Open-air venue surrounded
by dense trees and plantings



HIGH LINE Tiffany & Co. Foundation Overlook





PLANTING TERRACE

Outdoor terrace overlooking
the High Line and Hudson River



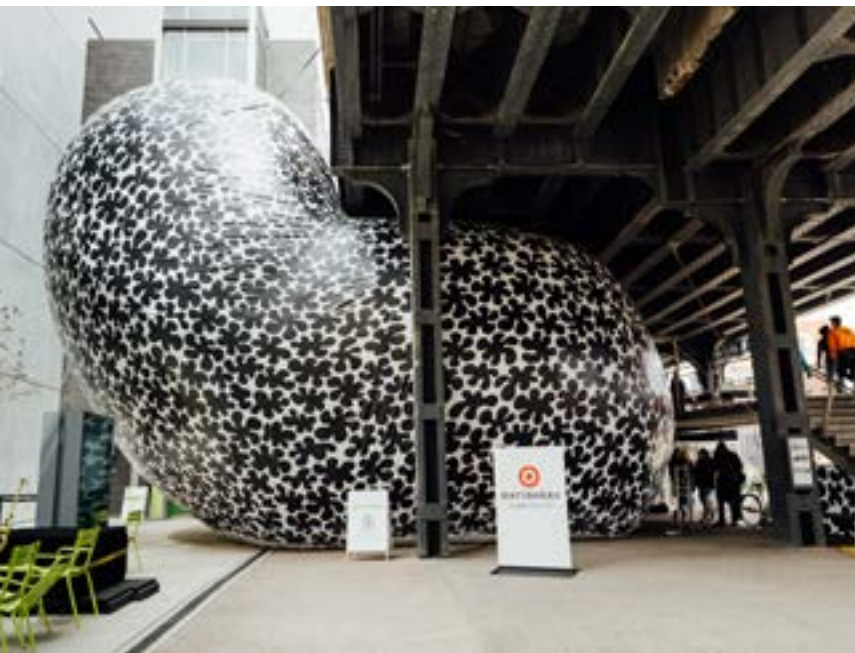


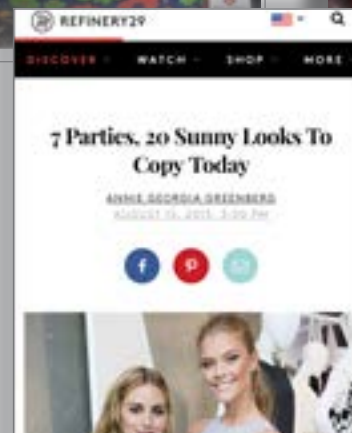
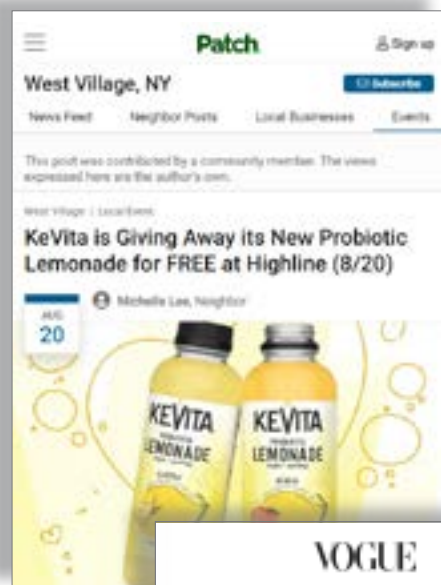
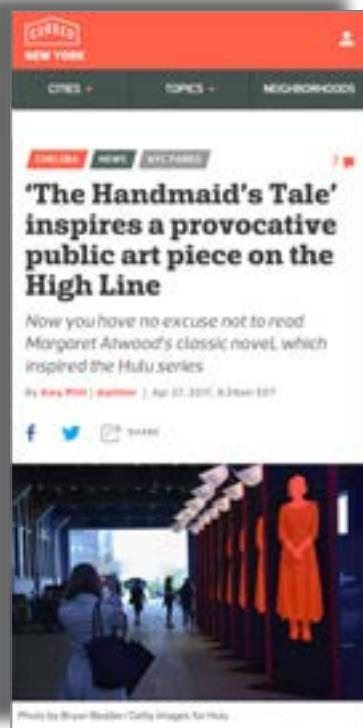
GANSEVOORT PLAZA

Street-level venue located beneath
the High Line in the historic
Meatpacking District









Some of the program's graduates will be featured at City Flavors, an event Monday, at Chelsea's High Line park, that is being organized by the Food Working Group of the Fund for Public Housing, a nonprofit organization.



Olivia Palermo and Nina Agdal make their looks work from day to evening for the Stylewatch x Revolve Fall Fashion Party on the High Line.



FLOORPLANS & SPECIFICATIONS

CHELSEA MARKET PASSAGE



Dimensions & capacity

- 5,575 sq. ft. (206' 6" × 27' 0")
- 19' 5" ceilings
- 550 standing / 365 seated
- 467 TPA

Final capacity determined by event layout

Location

On the High Line, between 15th and 16th Sts., along 10th Ave.

Electrical

- (1) 200A, 3-phase panel on the west side of the passage
- (4) 120v quad outlets with 20A dedicated circuits on the east side of the passage

Lights on the upper level of the passage can be dimmed or turned off; lights on lower level must remain on for the purpose of public safety

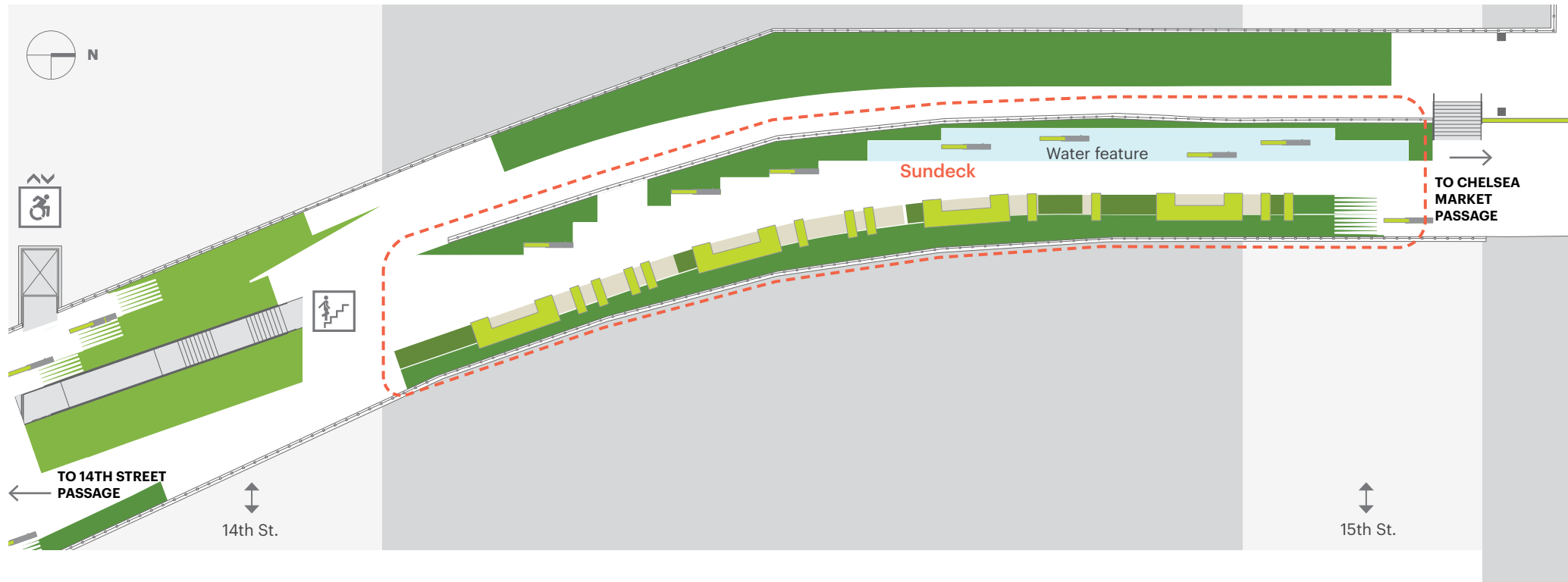
Highlights

- High Line's largest venue

Park amenities

- Adjacent to 16th St. stairs and elevator
- Adjacent to public restrooms
- (7) High Line food vendors, from late April through late October
- (3) Expressive matter vendors all year long
- On-site storage upon request

DILLER - VON FURSTENBERG SUNDECK



Dimensions & capacity

- 4,000 sq. ft.
- 250' 0" × varies (11' 0" average width)

Water feature

- 1,050 sq. ft.
- 138' 0" × varies (8' 0" average width)
- 400 standing / 250 seated
- 348 TPA

*Final capacity determined
by event layout*

Location

On the High Line, between 14th and 15th Sts., along 10th Ave.
May be rented in conjunction with the Chelsea Market Passage to maximize event space

Electrical

- Adjacent power available upon request
- Additional lighting recommended for evening events*

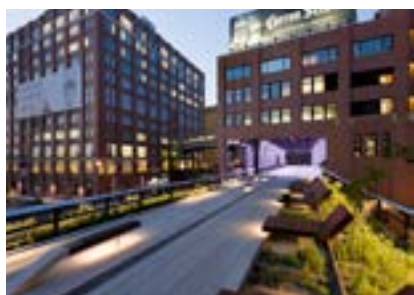
Highlights

- Hudson River and sunset views
- Rolling lounge chairs
- Signature water feature
- Dense trees and plantings with seasonal variation

Park amenities

- Adjacent to 14th St. stairs and elevator
- Close proximity to public restrooms located at 16th St.

CHELSEA MARKET PASSAGE & SUNDECK



Dimensions & capacity

Chelsea Market Passage

- 5,575 sq. ft
- 206' 6" × 27' 0"
- Ceiling Height: 19' 5"
- 550 standing / 365 seated
- 467 TPA

Sundeck

- 4,000 sq. ft
- 250' 0" × varies (11' 0" average width)
- 400 standing / 250 seated
- 348 TPA

Final capacity determined by event layout

Location

On the High Line, between 14th and 16th Sts., along 10th Ave.

Electrical

- (1) 200A, 3-phase panel on the west side of the Chelsea Market Passage
- (4) 120v quad outlets with 20A dedicated circuits on the east side of the Chelsea Market Passage

Lights on the upper level of the passage can be dimmed or turned off; lights on lower level must remain on for the purpose of public safety; additional lighting on the Sundeck recommended for evening events

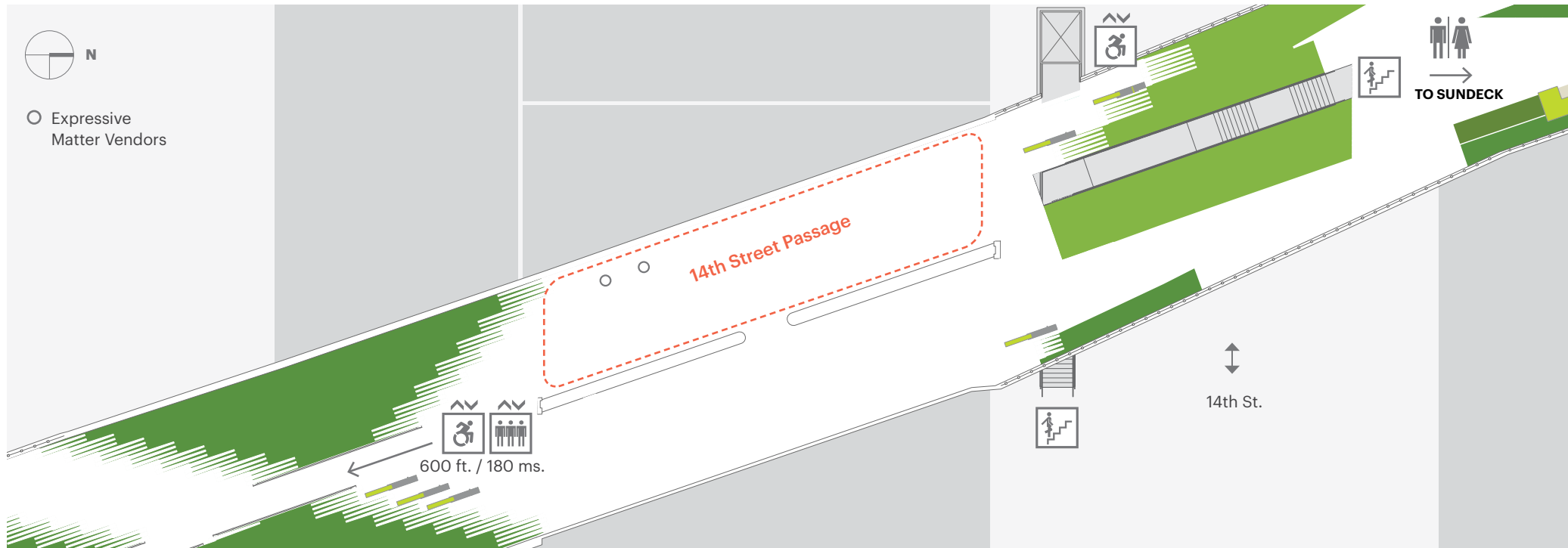
Highlights

- Covered and open-air venue combination
- Largest venue combination

Park amenities

- Adjacent to stairs and elevator at 14th St. and 16th St.
- Close proximity to public restrooms
- (7) High Line food vendors, from late April through late October
- (3) Expressive matter vendors all year long
- On-site storage upon request

14TH STREET PASSAGE



Dimensions & capacity

- 2,570 sq. ft
- 105' 0" × 24' 6"
- Ceiling height: 26' 9"
- 200 standing / 165 seated
- 213 TPA

Final capacity determined by event layout

Location

On the High Line, between 13th and 14th Sts., along 10th Ave.
Events occur within the west side of the split passage

Electrical

- (1) 200 AMP panel on the northwest side of the passage

Lights on the west side of the passage can be dimmed or turned off; lights on the east side must remain on for the purpose of public safety

Highlights

- Greater privacy for intimate event settings
- Historic freight rail line features
- Large-scale projection screen: 10' 2" × 18' 0"

Park amenities

- Adjacent to 14th St. stairs and elevator
- (2) Expressive matter vendors all year long
- On-site storage upon request



Dimensions & capacity

- Without seating steps:*
- 475 standing / 185 seated
 - 4,800 sq. ft.
 - 75' 4" x 63' 8"
 - 480 TPA

- With seating steps:*
- 5,300 sq. ft.

Final capacity determined by event layout

Location

On the High Line at 30th St. and 10th Ave.

Electrical

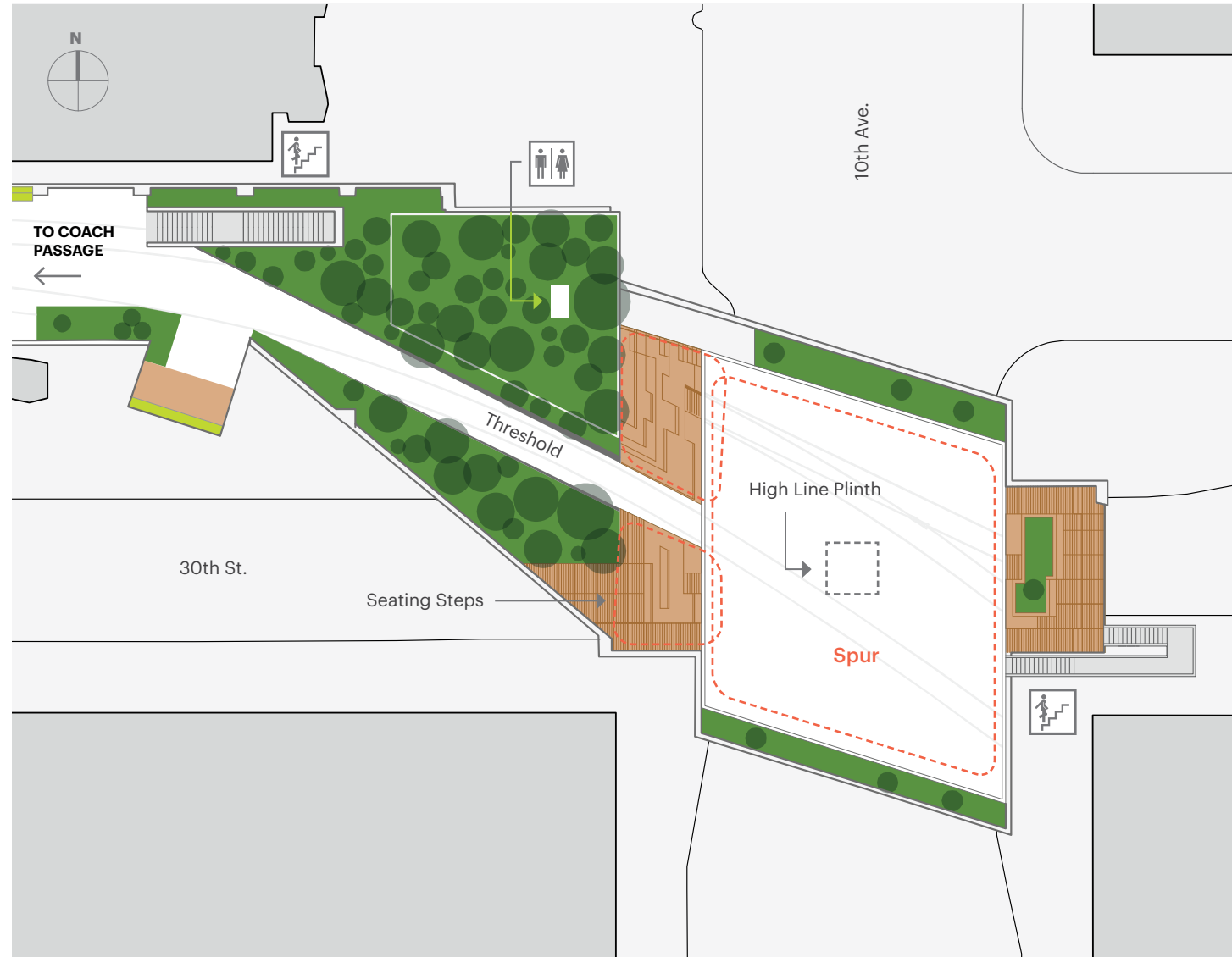
- (2) 200A Company Switch with cam-style connections
- Multiple 120v duplex outlets with 20A dedicated circuits

Highlights

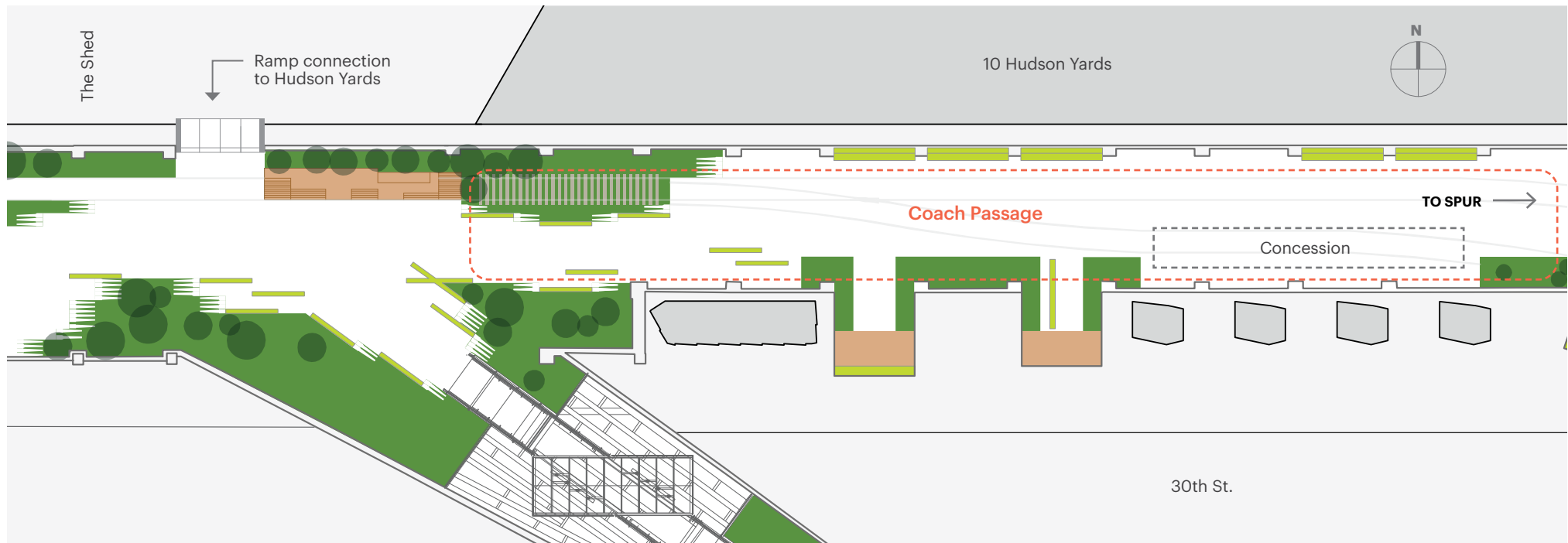
- One of two venues adjacent to Hudson Yards
- Open-air venue

Park amenities

- Adjacent to Hudson Yards ramp connection and The Shed
- Adjacent to (3) access points at 30th St. and 10th Ave.
- Public restrooms located in venue
- Art piece on display on the High Line Plinth



COACH PASSAGE



Dimensions & capacity

- 3,500 square ft.
- 200' 0" x 22' 0"
- Ceiling height: 70' 0"
- 350 standing / 225 seated
- 292 TPA

Final capacity determined by event layout

Location

On the High Line at 30th St. and 10th Ave.

Electrical

- (1) 200A Company Switch with cam-style connections
- Multiple 120v duplex outlets with 20A dedicated circuits throughout passage

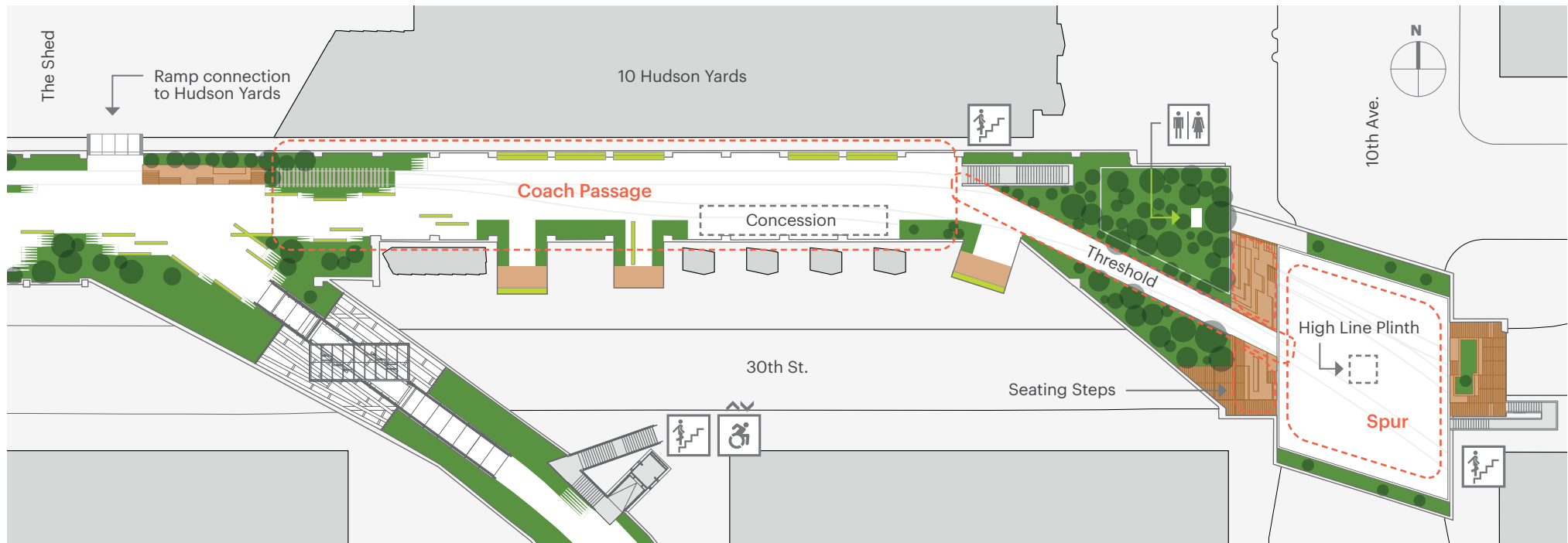
Highlights

- One of two venues adjacent to Hudson Yards
- Semi-covered venue

Park amenities

- Adjacent to Hudson Yards ramp connection and The Shed
- Adjacent to (3) access points at 30th St. and 10th Ave.
- Public restrooms located on the adjacent Spur

SPUR & COACH PASSAGE



Dimensions & capacity

Spur, Coach Passage & Threshold

Without seating steps:

- 10,000 sq. ft

With seating steps:

- 10,500 sq. ft

- 1,200 standing / 410 seated

- -950 TPA

Final capacity determined by event layout

Location

On the High Line at 30th St. and 10th Ave.

Electrical

Spur

- (2) 200A Company Switch with cam-style connections
- Multiple 120v duplex outlets with 20A dedicated circuits

Coach Passage

- (1) 200A Company Switch with cam-style connections
- Multiple 120v duplex outlets with 20A dedicated circuits throughout passage

Highlights

- Only venues adjacent to Hudson Yards
- Semi-covered and open-air venue combination

Park amenities

- Adjacent to Hudson Yards ramp connection and The Shed
- Adjacent to (3) access points at 30th St. and 10th Ave.
- Public restrooms located on the Spur
- Art piece on display on the High Line Plinth

10TH AVENUE SQUARE



Dimensions & capacity

- 1,820 sq. ft
- 48' 0" × varies (37' 0" average width)

Stage

- 230 sq. ft
- 41' 5" × 5' 7"
- 150 seated
- 178 TPA

Final capacity determined by event layout

Location

On the High Line, at 17th St.,
along 10th Ave.

Electrical

- Limited power available

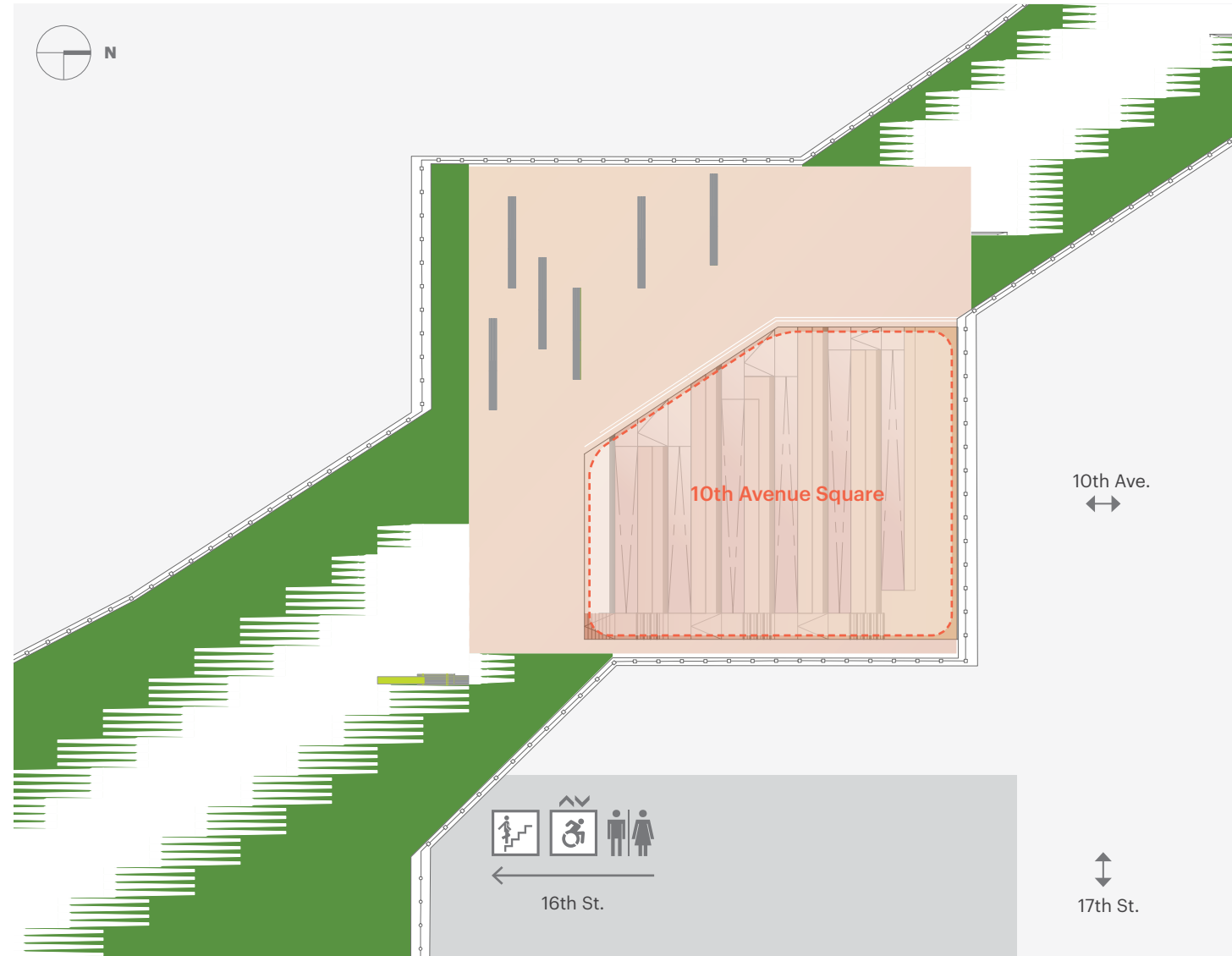
*LED lighting along benches and railings; additional
lighting recommended for evening events*

Highlights

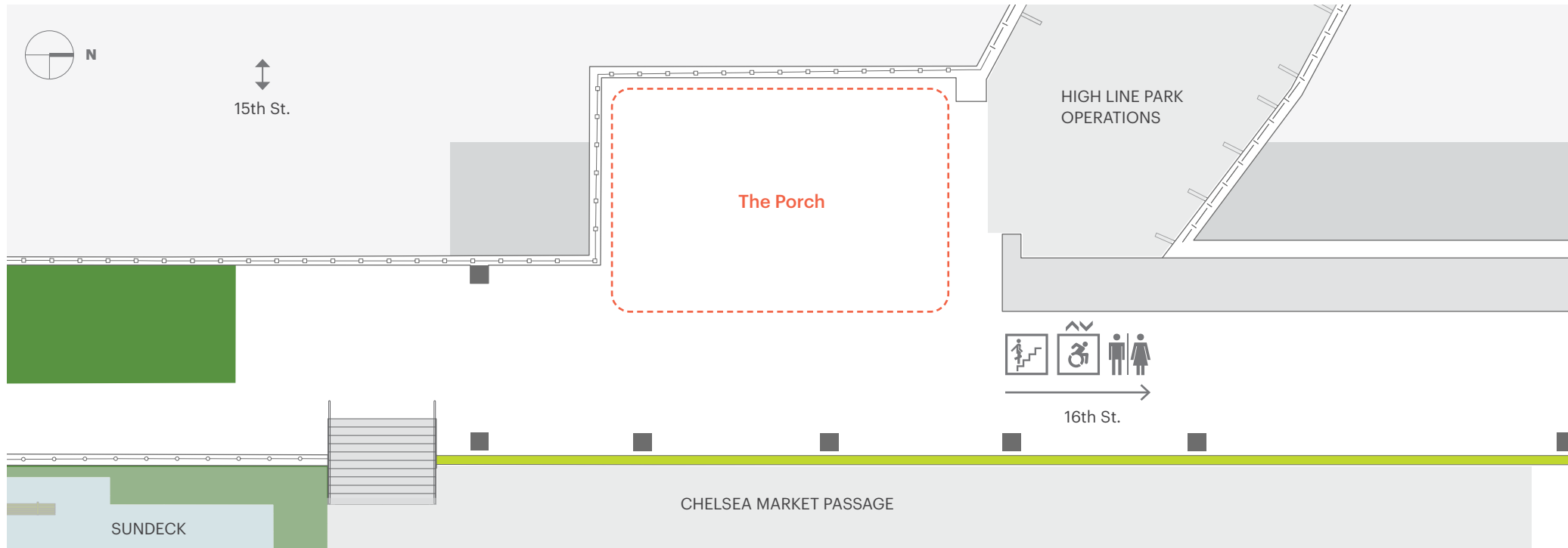
- Cut-out windows overlooking 10th Ave.
- Terraced, theater-style seating
- Wood benches and flooring
- Historic freight rail line design features

Park amenities

- Close proximity to 16th St. stairs and elevator
- Close proximity to public restrooms



THE PORCH



Dimensions & capacity

- 1,000 sq. ft
- 39' 0" × 25' 8"
- 100 standing / 65 seated
- 79 TPA

Final capacity determined by event layout

Location

On the High Line, between 15th and 16th Sts., along 10th Ave.

May be rented in conjunction with the Chelsea Market Passage and/or the Diller – von Furstenberg Sundek for back-of-house space

Electrical

- Adjacent power available upon request
- LED lighting along railings; additional lighting recommended for evening events*

Highlights

- Hudson River and sunset views
- High Line food vendor catering package available
- Footprint can accommodate up to a 20 × 20 tent

Park amenities

- Close proximity to stairs and elevator at 14th St. and 16th St.
- Close proximity to public restrooms
- On-site storage upon request

TIFFANY & CO. FOUNDATION OVERLOOK



Dimensions & capacity

- 1,265 sq. ft.
- 85' 0" × varies (10' 0" average width)

Balcony

- 415 sq. ft.
- 30' 0" × varies (10' 0" average width)
- 125 standing / 25 seated
- 108 TPA

Final capacity determined by event layout

Location

On the High Line, at Gansevoort and Washington Sts.

Electrical

- 20AMPS available

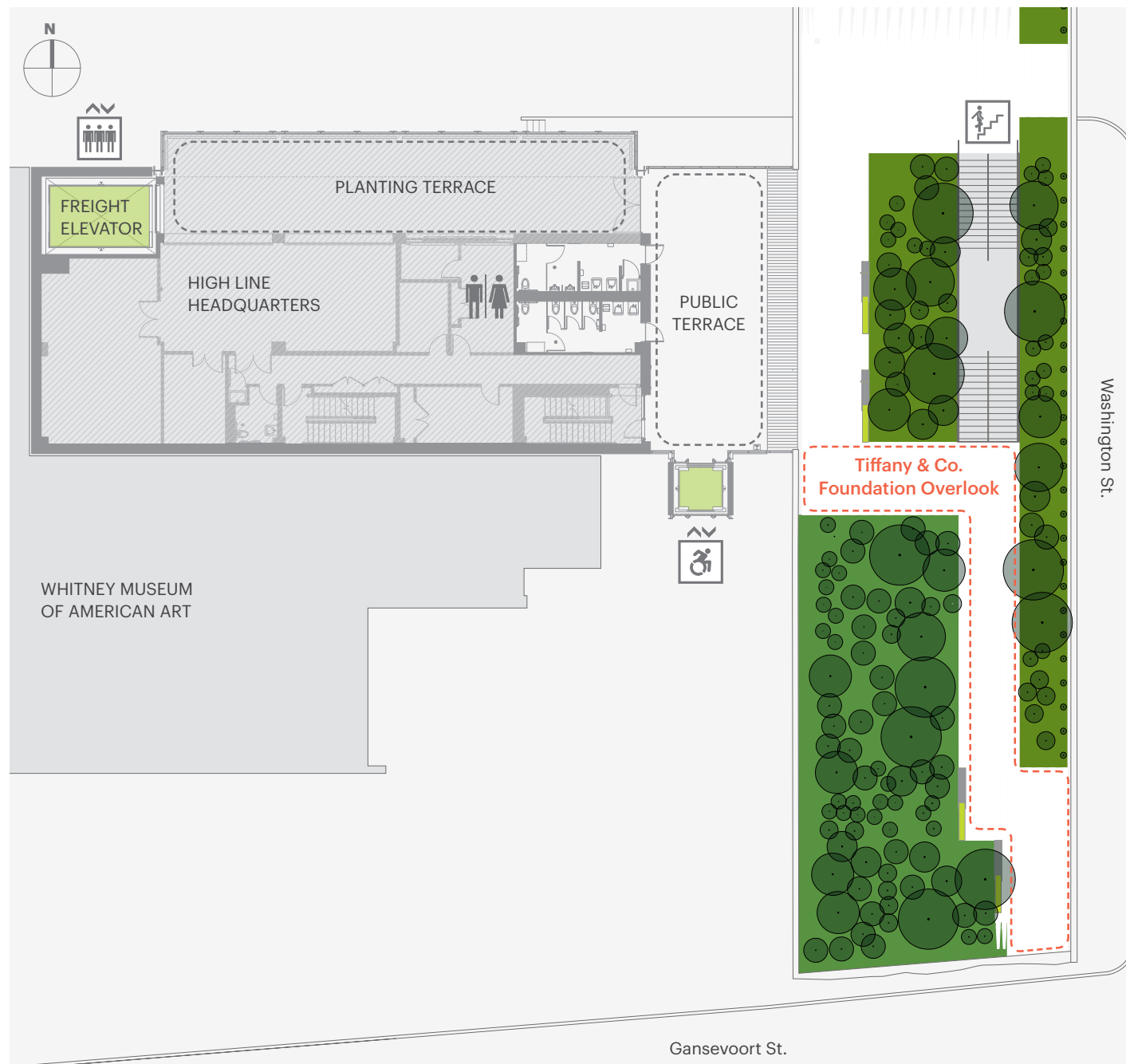
LED lighting along planting beds; additional lighting recommended for evening events

Highlights

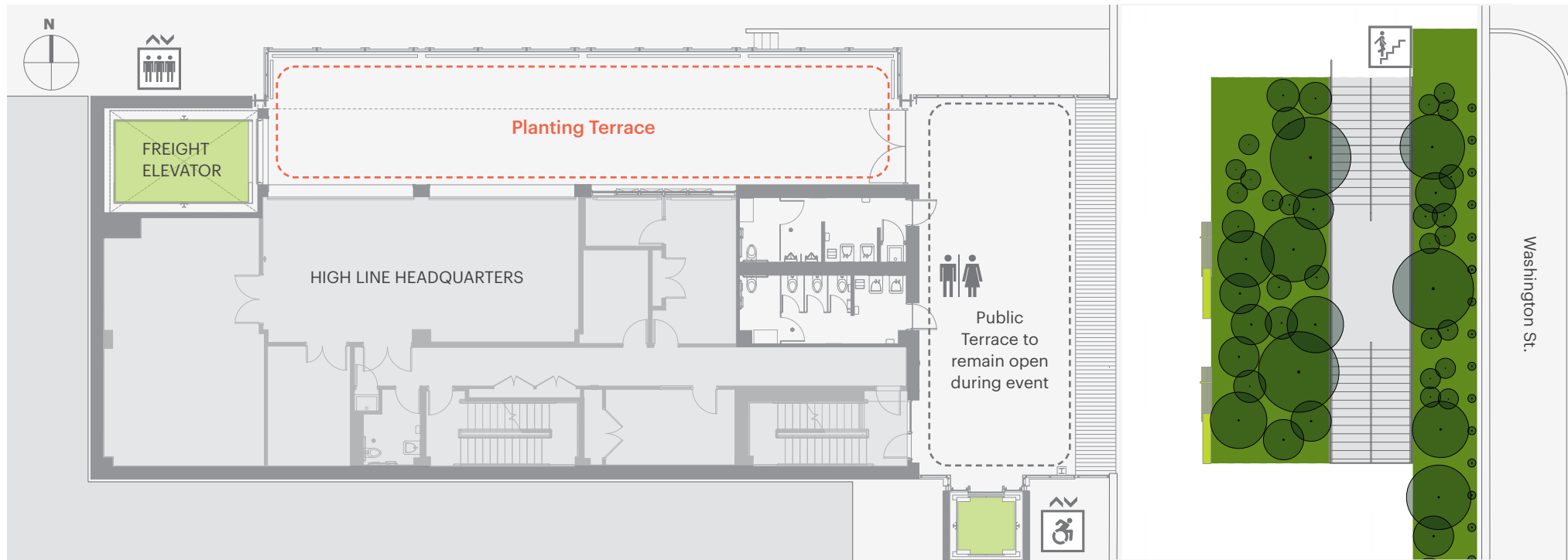
- Greater privacy for intimate event settings
- Located at the southern end of the High Line
- Cityscape views
- Dense plantings with seasonal variation

Park amenities

- Adjacent to Gansevoort St. stairs and elevator and public restrooms
- Close proximity to High Line Headquarters freight elevator



PLANTING TERRACE



Dimensions & capacity

- 1,205 sq. ft.
- 76' 8" x 15' 9"
- Ceiling height: 11' 6"
- 125 standing / 80 seated
- 75 TPA

Final capacity determined by event layout

Location

On the High Line, at Gansevoort and Washington Sts.

Adjacent to the High Line Headquarters maintenance and operations facility

Electrical

- 20AMPS available

Additional lighting recommended for evening events

Highlights

- High Line and Hudson River views
- Greater privacy for intimate event settings

Park Amenities

- Close proximity to Gansevoort St. stairs and elevator and public restrooms
- Adjacent to High Line Headquarters freight elevator
- On-site storage upon request

GANSEVOORT PLAZA



Dimensions & capacity

- 1,830 sq. ft
- 57' 2" x 32' 0"
- Height to High Line beams: 19' 6" – 20' 10"
- Height to concrete deck: 24' 0" – 25' 4"

Final capacity determined by event layout

Location

On street-level, on the northwest corner of Gansevoort and Washington Sts.

Electrical

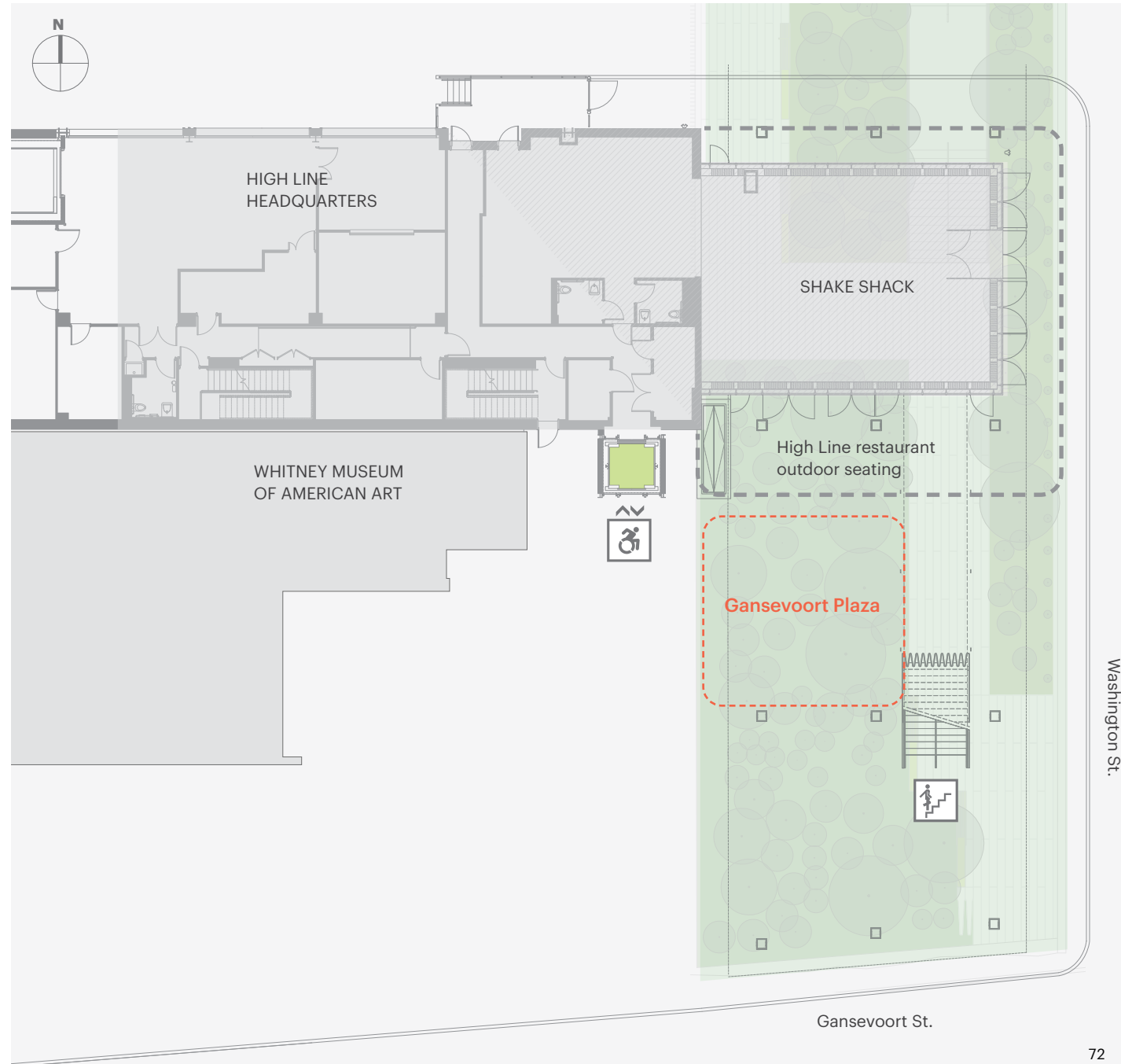
- Adjacent power available upon request
- Additional lighting recommended for evening events*

Highlights

- Located at the High Line's southern end in the historic Meatpacking District
- Located at a heavily trafficked intersection
- Adjacent to the High Line restaurant
- Adjacent to the Whitney Museum of American Art
- Dozens of high-end retail shops, fashion boutiques, and restaurants nearby

Park amenities

- Adjacent to Gansevoort St. stairs and elevator
- Close proximity to public restrooms on the High Line



CONTACT

Ryan Patrick Ervin

Director of Venue Relations
Friends of the High Line
ryan.ervin@thehighline.org
he/him/his

Itai Gruss

Event Production Manager
Friends of the High Line
itai.gruss@thehighline.org
he/him/his

