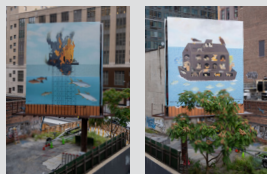




# ART

High Line Art commissions and produces 30+ art projects each year, including site-specific commissions, exhibitions, performances and video programs.

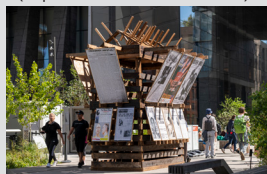
More details at [thehighline.org/art](https://thehighline.org/art)



**1. Jessie Homer French, *Blowout* and *Noah's Ark in the Coachella Valley***  
(September - December 2023)



**2. Pamela Rosenkranz, *Old Tree***  
(May 2023 - Fall 2024)



**3. Faheem Majeed, *Freedom's Stand***  
(Sept 2022 - Feb 2024)



**4. Julia Phillips, *Observer, Observed***  
(Sept 2022 - Feb 2024)



**5. Gabriel Chaile, *The wind blows where it wishes***  
(May 2023 - April 2024)



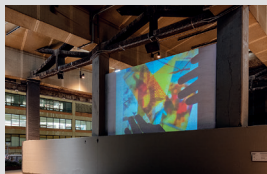
**6. Nina Chanel Abney, *NYC LOVE***  
(Nov 2022 - Nov 2023)



**7. Yu Ji, *Column-Untitled No.3***  
(April 2023 - March 2024)



**8. Cosima von Bonin, *WHAT IF THEY BARK?***  
(Sept 2023 - Aug 2024)



**9. High Line Channel**  
(Rotating program starts at dusk)  
Pictured: Sky Hopinka, *Lore*, 2019.



**10. Baseera Khan, *Painful Arc II***  
(Shoulder-High)  
(June 2023 - May 2024)

Lead support for High Line Art comes from Amanda and Don Mullen. Major support is provided by Shelley Fox Aarons and Philip E. Aarons, The Brown Foundation, Inc., and Charina Endowment Fund.

Photos by Timothy Schenck



Presented by Guardian,  
Lead Wellness Sponsor of the High Line



# WELCOME



Timothy Schenck

The High Line is both a nonprofit organization and a public park on the West Side of Manhattan. Through our work with communities on and off the High Line, we're devoted to reimagining the role public spaces have in creating connected, healthy neighborhoods and cities.

Built on a historic, elevated rail line, the High Line was always intended to be more than a park. You can walk through gardens, view art, experience a performance, savor delicious food, or connect with friends and neighbors—all while enjoying a unique perspective of New York City



## Express to your inbox

Sign up for the High Line newsletter for the latest updates, stories, events & more.

# HISTORY

**1934**, the original railway opened transporting millions of tons of meat, dairy, and produce.

**By the early 1980s**, no more trains ran along the line, and the tracks fell into disuse.

The structure remained threatened by demolition **until 1999**, when Joshua David and Robert Hammond began lobbying to save and transform the structure into public open space.

**2003**, the High Line hosted an "ideas competition," receiving 720 ideas from over 36 countries for ways the park might be used (including ideas that were neither realistic nor practical, like a rollercoaster, or a mile-long lap pool).

**2009**, ten years after Friends of the High Line was formed, the first section of the High Line between Gansevoort and 20th Streets opens to the public.

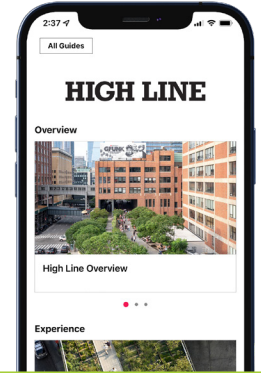
**2011**, Section 2 opened (20th to 30th Streets); **2014**, the Rail Yards section opened (30th to 34th Streets); **2019**, the Spur, the final section of the historic structure, opened.

**June 2023**, the new High Line – Moynihan Connector opens. This new pathway, comprised of two intersecting bridges, allows visitors to move from anywhere on the High Line to Moynihan Train Hall with only one street crossing.

# INFO

## One path. Countless ways to explore.

Download the free Bloomberg Connects app and explore the High Line's art, design, and gardens like an insider.



## Park rules

The following are not permitted on the High Line:



**NO SMOKING**



**NO BICYCLES**



**NO PETS**



**NO SKATEBOARDS, SKATES,  
OR RECREATIONAL SCOOTERS**



**NO DRINKING ALCOHOL**

For complete rules, visit [thehighline.org/visit](https://thehighline.org/visit)